



Projects

Offices & Factories
Commercial
Residential Housing
Residential Houses
Townships & Urban Design
Institutions & Administrative
Conservation Projects

Ongoing Works

People

Principals
Associates
Architects

Associated Consultants

List of Projects



Stonehenge. Circa 3200 B.C.

We are a Design consultancy firm, with expertise & involvement in the following aspects of the Building process:

- **Architecture**
- **Urban Design**

Established since 1997, the practice has in-house qualifications & experience for conceptualization & design of the above aspects. We further associate with Engineering consultants to be able to provide complete solutions to all projects. The Office has developed infrastructure, in the form of automation, data-base & research opportunities, to complement its professional resources- so as to provide solutions that are innovative, contextualized & efficient.

The Office has a repertoire of Built & ongoing projects. Besides these, it engages in Design competitions & proposals, that are a conscious effort at exploring & developing ideas- together, & with the professional experience of the principals, they form the collective experience of the Office.

At **SKA** Commitment to Design excellence is our operational motto. Differentiating 'Design' from visual aesthetics alone & distancing our work from any stylistic approaches. We striven to broaden the base of Design to encompass all aspects of planning, Engineering, construction & costs- With responsibility towards our Clients & the Built Environment.

C-7, Sector- 20.
PIN. 201301. (U.P)

N.O.I.D.A.
India.



Workers Entrance. Dimple Creations (p) Ltd. Noida.



Factory Building. Hosiery Complex, Noida. 2010.
For **Dimple Creations (P) Ltd.**

Area: 85,000 Sq.Ft. **Cost :** Rs. 11 Crores.

The Block A of the programme, on a site of 8000 Sq.M & consisting of 85,000 Sq.Ft of Serviced Factory & office space for the State of the Art Garment manufacturing unit, is a part of the Two Block with a Garden in Between Design.

SKA services
Architecture Design.
Services Design.





Working Hall. PPRolling Mills. Faridabad.



Factory Building. Noida. 2009.
For **M/s Vasudev Impex**
Area: 16,000 Sq.Ft. **Cost:** Rs. 2 Crores.

SKA services
Architecture Design.
Services Design.



Factory Building. Noida. 2011.
For **M/s FineLines**
Area: 40,000 Sq.Ft. **Cost:** Rs. 5 Crores.

SKA services
Architecture Design.
Services Design.



Office Building. Noida.
For **3S Strategic Sourcing.**

Area: 8000 Sq.Ft. **Cost :** Rs.1.5 Crores.

SKA Services:
Architectural Design





Factory Building. Noida. 2009.
For **M/s SnD.**
Area: 20,000 Sq.Ft. **Cost:** Rs. 2 Crores.

SKA services
Architecture Design.



Factory Building. Noida. 2009.
For **N.S. Industries.**
Area: 20,000 Sq.Ft. **Cost:** Rs. 2 Crores.

Ongoing Factory no. 3 for M/s Nsl, is in continuation designed by SKA as an garments manufacturing unit.

SKA services
Architecture Design.



Factory Building. Noida. 2009.
For **M/s SB(I)Ltd.**
Area: 20,000 Sq.Ft. **Cost:** Rs. 2 Crores.

SKA services
Architecture Design.

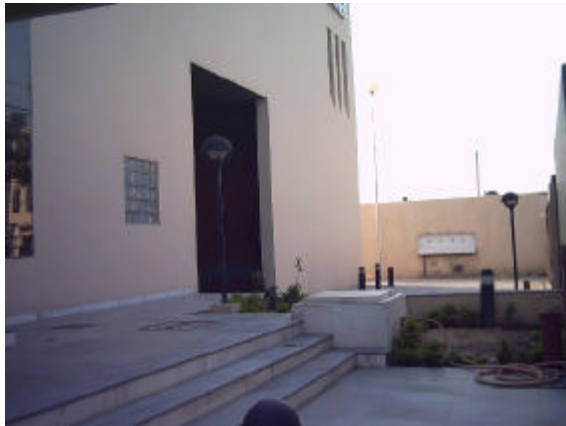


Factory Building. Noida. 2004.
For **Vidya Exports.**
Area: 12000 Sq.Ft. **Cost:** Rs.2 Crores.

This Office building on a site of 480 Sq.Mt. develops a series of architectural forms that break its own industrial geometry at the ground level into a series of dynamic planes, generating spaces & character. A fully Automated building for Private Office use. covd. area- 10,00 Sq.Ft.

SKA services
Architectural Design





Factory Building. Panipat. 2002.
For **Shree International.**
Area: 50,000 Sq.Ft. **Cost:** Rs.3.5 Crores.

The factory Building is on a plot of about 4000 Sq.Mt. The Architectural Form is a derivative of the Functional flow of the work processes, the elevation in the front occupying the trucking services. A very functional derivative, The architectural space making contributes to enhance the production environment.

SKA services
Architectural Design





Factory Building. Noida. 2005.
For **N.S.Industries**
Area: 12,000 Sq.Ft. **Cost:** Rs.1.5 Crores.

This Home Furnishings E.O.U. is built on a 1000 Sq.Mt. Plot with adjoining 2000 Sq.Mt. of Area for Offices & showroom Etc.

SKA services
Architecture Design.
Services & Works Layout.





Factory & Administrative Building. Noida. 2001.
For Shree International.
Area: Cost:

SKA services
Architecture Design.
Interior Design.



Factory & Administrative Building. Noida. 2003.
For Krishna Sales Co.
Area: Cost:

SKA services
Architecture Design.
Interior Design.



Factory Building. Noida. 2004.
For Shree International.
Area: Cost:

SKA services
Architecture Design.
Interior Design.



The Shopping mall facility seeks to create an urban form that is interactive with the street & its surroundings. Sitting on a major urban artery & along a railway line, it is developed in an 'built to edge' imagery, with a pronounced linear facade. The facade interacts with the street to allow the shopping activity to become a part of the street environment. It thus has forms, staircases, escalators, signage's, sit outs etc. placed along this edge. As a gesture it articulates along the entrance to make a semi- defined entrance. Courtyard.

The circulation is rationalized to minimize the pedestrian & vehicular conflict, both having separate areas. The car parking goes to the second basement & utilizes the street behind for streamlining the movement.

The built form consists of an anchor store at two levels, a dedicated restaurant with outdoor usable space, Food court linked to the multiples foyer & a outdoor food court on the terrace level.

The facility is to become a landmark destination within its large residential context.

Shopping Mall & Multiplex. Lucknow. 2006
For **Unitech Ltd.**

SKA services
Architecture Concept Design.



Office Building For BALtd. Noida. 2009.
 For **Batra Associates Ltd.**
 Area: 40,000Sq.Ft. Cost: Rs. 4.5 Cr.

SKA services
 Architecture Design.
 Structural & Services Design.





Entrance Facade, M/s Triumph, Noida



Office Building. Noida. 2011
For **M/s TRIUMPH.**
Area: 20,000 Sq.Ft. **Cost:** Rs. 3 Cr.

SKA services
Architecture Design.
Structural & Services Design.



Office Building. Noida. 2010
For **M/s KP Homes.**
Area: 20,000 Sq.Ft. **Cost:** Rs. 2.2 Cr

SKA services
Architecture Design.
Structural & Services Design.



South City Gardens, view from ClubSide, Lucknow



Group Housing at South City, Lucknow.
2006.
For **Unitech Ltd.**
Area: **Cost:**

The Scheme is disposed on a linear plot of about 9000 Sq.Mt. in the Residential Suburbs of Lucknow, the programme consists of 93 dwelling units of two bedroom & three bedroom type each. The Architectural design makes use of the programme by varying the design & type of units, along the vertical section, so as to create variety, advantage & architectural quality. Organized as a two to a core design, the layout is along the linear central Greens, creating a street face & a garden face, to the apartments. The apartment unit responds to both side & acts as a communicator between them also.

The Built mass is six storeys high, & articulated to scale with the nearby houses.

Punctuated on both sides of the Greens are Club House & community facilities.

SKA services
Architecture Design.
Structural & Services Design.





View From Road Of Shyam Khetan House, Noida.



Residence. Noida. 2004.
For **Mr. Shyam Khetan.**

The House is Built on a 380 Sq.Mt. Plot in the upmarket residential area of Noida. A Town House in its basic organization, it covers a total area of about 8000 Sq.Ft. Occupied by his family of five persons, the house has a car parking basement, a second floor play rooms & two floors for residential activities.

SKA services
Architecture Design.
Interior Design.





View From Road .House of Shalini & Mohit Jain. Noida.



View From Road .House of Mr. Anil Gupta. Noida.



House of Ashish & Ritika wahi, Noida.



Ahmed House. Noida. 2006.
For **Mr. Anis Ahmed.**

SKA services
Architecture Design.



Garden Side View, House of R.K.Khetan, Noida.



Khetan House. Noida. 2005.
For **Mr. R.K.Khetan.**

The House is Built on a 1500 Sq.Mt. Plot in the upmarket residential area of Noida.

SKA services
Architecture Design.
Landscape Design.





Metal Canopy, House of Devesh & Shalini, Noida.



Agrawal House. Noida. 2005.
For **Sh. V.N.Agrawal.**

The House is Built on a 250 Sq.Mt. Plot in Noida.

SKA services
Architecture Design.



Devesh & Shalini House. Noida. 2005.
For **Mr. Devesh Agrawal.**

SKA services
Architecture Design.



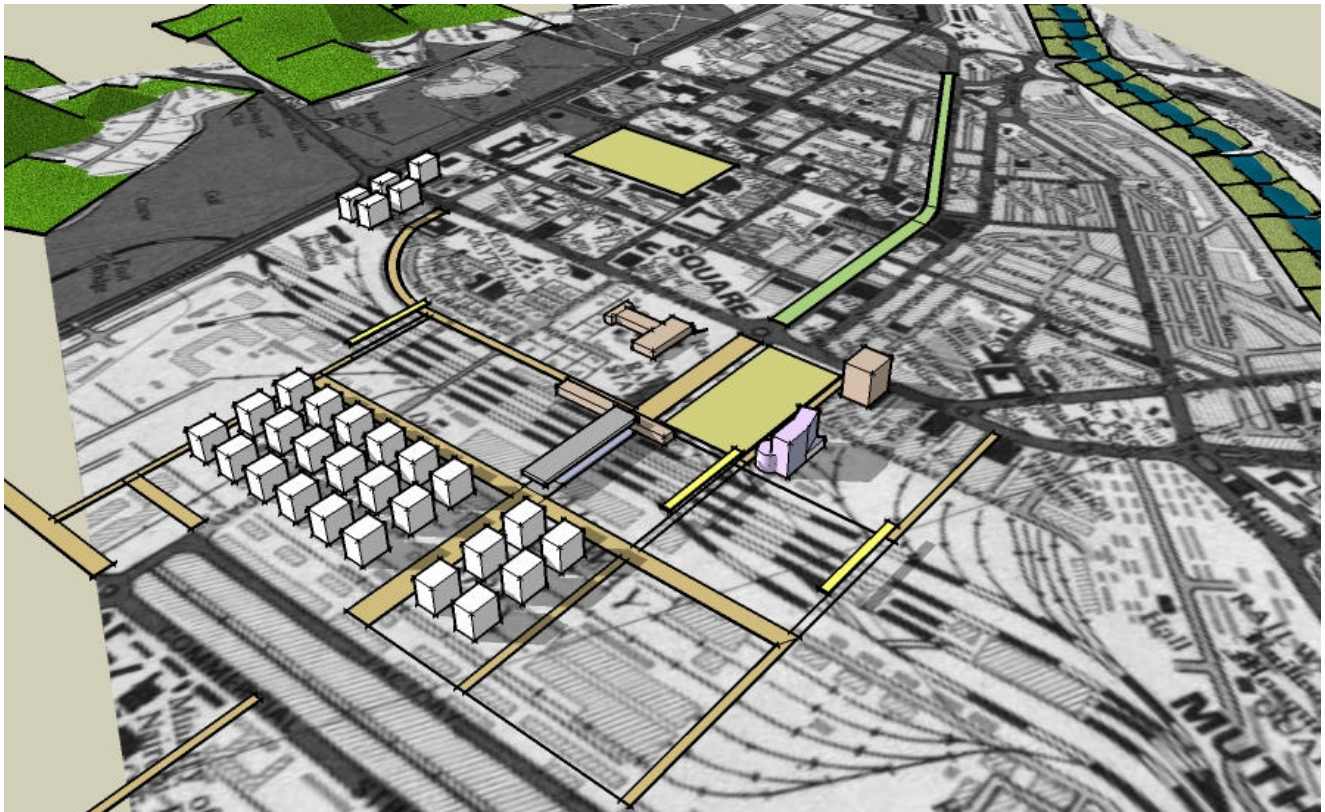
Planned Urban Development. Chennai. Ongoing 2006.
For **Unitech Ltd.**
Area: **Cost:**

The PUD is to be developed on a 250 Acres of Suburban Area on the outskirts of Chennai. The Development is adjoining a vastly developed IT Business area.
The Programme is statutory developed with components of a SEZ, Retail, commercial & a larger Residential. The Master Plan Develops a land use pattern to augment & realize the interrelationship of these components, Handle the aspects of Phasing- all while developing a public realm that is collectively charged as a community asset & stand loci for the community to develop around.
The master plan is developed by the **SWA** group, USA.

SKA services
In Urban Design Team with **SWA** Group. U.S.A.

Urban Design of Residential Development .Cochin. 2006.
For **Unitech Ltd.**
Master Plan for Residential Development. Chennai. 2006.
For **Unitech Ltd.**
Master Plan for Sub- City. Siliguri. 2006.
For **Unitech Ltd.**

SKA services
In Urban Design Team with **SWA** Group. U.S.A.



Urban Design Studies. Nairobi Metropolitan Area. Kenya.
Govt. Of NMR, Kenya.
 With ArCiti. For C.E.S.

The new constitution of Kenya is re organizing the Counties of the Country. The NAIROBI metropolitan area is constituting the Nairobi City & the surrounding of towns, catchments & areas. In Continuation of its Vision Plan, The NMR Govt. Is undertaking a large level study of the many potentials of this Area, with a view to develop the framework of subsequent planning & development. The CES is the principal consultants on the study, ranging from Physical Planning, Infrastructure, ecology, others & Urban design.

Along with ArCiti, the Urban Design study of potentials, Cognizance & directions has been undertaken by us.

SKA services
 In Urban Design Team with ArCiti.

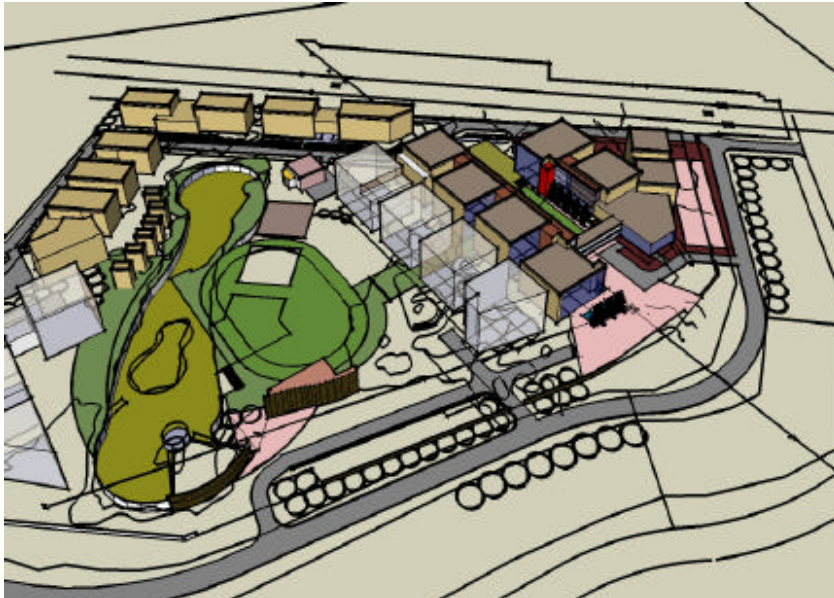


The C.B.D. At Nairobi, Kenya. From across the Uhuru Park.



Urban Design Scheme for Property Development.
shahadra. Scheme aborted. 2001.
For **DMRC**, New Delhi.

As appointed Urban designers for the property development over the extra F.A.R. left from operational services of the Metro rail station at this Site, we had designed a scheme in response to the movement pattern such as to minimize the conflict of the commercial & station activity- the two interacting at appointed places & manner such as to benefit in an acceptable Quantum.



New Campus for School of Planning & Architecture.
at Vasant Kunj, New Delhi.
Competition Entry . 2009.

In association with **Jaspreet Kaur Architect**.



Metro square. Facility Building at Noida..
For **Noida Authority**.
Design Competition. 2006.

The Entry Point Metro station to the City of Noida, is to be located Next to this Prime Real Estate, owned by the Govt. The opportunity is being realized by the City Govt. In developing this Facility that becomes a Modal Interchange, Parking Facility & a Civic facility to the City. The Form Undertakes to dispose the Programme by developing a massive plinth of a parking & interchange Programme, Faced by Civic facilities like Galleries, Information centres etc. The Civic face is creates an urban frontage, along a Public garden. The top of this Bulk is a Forum/Square/plaza nature of space that is edged by a shopping mall & topped by a rentable Office Block.



Situated in the lush paddy fields, surrounded between coconut highland groves, the about 180 acres of development is on a ecologically sensitive & visually inspiring site. The need of high intensity development contrasts with the low sustainability of the land&is indeed a design&engineering parameter. The proposals look at using the lay of the land & a sensitive landscape reformation to develop the urban form. The form in turn, maintains the pristine character of the site, by developing a defined character along the Public spaces. The road system is a integrated open space system, that weaves itself through the ensuing communities. The programme is principally residential. The master plan is developed by the **SWA** group, USA.

SKA services
In Urban Design Team with **SWA** Group.

Residential Development. Kochi. Project Ongoing 2006.
For **Unitech Ltd.**



Conceptual Master Plan.Port of Pipavav.
Work Submitted.2007.

The 456 Hectares site is located on the Coast of the Indian state of Gujarat, approximately 115 Kilometers from Southwest of Bhavnager. The most relevant natural conditions that will influence its development are the two major watersheds that flank on either side: The Devrapura creek & The Motapat creek, besides the significant amount of silt deposited at the mouths of both. These silted areas are also an excellent habitat for mangroves.... The master plan is developed by the **SWA** group, USA.

SKA services

In Urban Design Team with **SWA** Group.



Global Path Finder School, Patudi, Haryana.



Global PathFinder School. Patudi. 2005.
For Mr. Amit Yadav.
Site Area: 20 Acres

The Junior School Building is to be a part of a larger school Layout that is underway.

The Junior school is a Plan form deriving its shape from historical examples of public spaces. The open space is the design departure of the plan form, around which all physical activities are surrounded. The spaces are simple in treatment with color & materials providing the visual exuberance.

The Senior School Building is currently under finishing.

SKA services
 Architecture Design.
 Master Planning

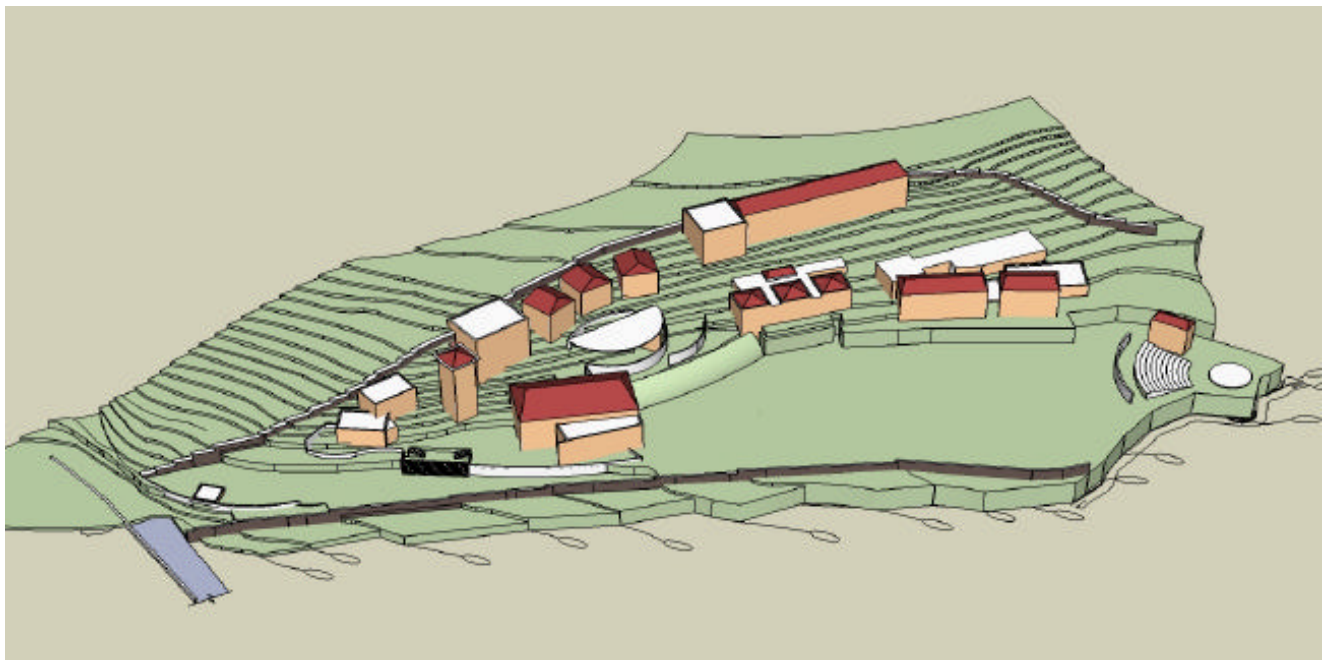


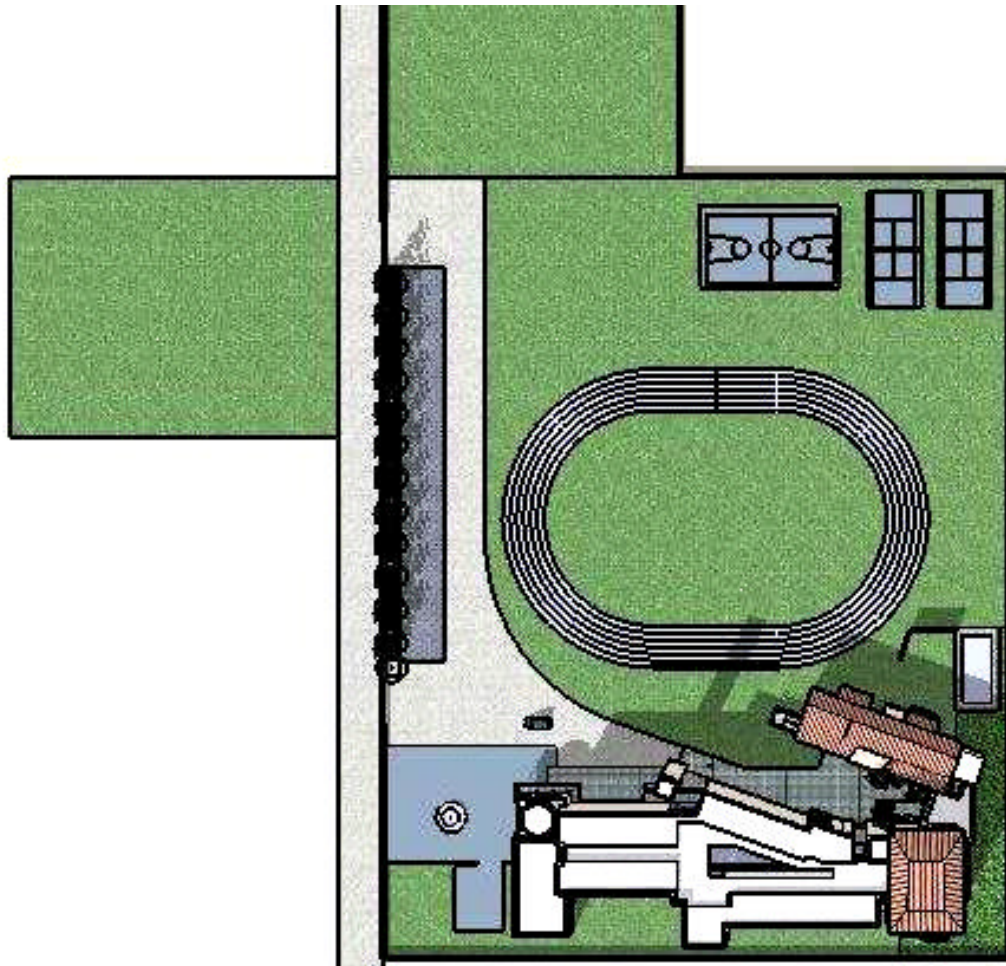


**The Highland Public School DharamShala. H.P. 2008.
For Balaji Education Society.**

The Site of about 1.05 Hectares is situated on the foothills of a mountain spur, towards the lowland of Dharamshala. Linear in disposition, the entrance side has a limited frontage. The Context is set with the Hill for a back drop, a mountain trail cutting off the property from the Hill. The Dholadhar range is visible to the eastern part of the site, the snow capped mountains never losing their presence. The Plan form describes a linear development, in continuation of the site Profile & contours. The Linearity is punctuated by a series of spaces(Yards) with different nature & role. The major Blocking & massing is further described about the main space of the School- the Playing Fields.

SKA services
Master Plan.





School Building. Kosli, Haryana. 2007.
For **Mr. Amit Yadav**
Area: 1,00,000 Sq.Ft.

SKA services
Architecture Design.



This fine memorial & cemetery of the soldiers fallen in world war II, is the design of Architect Henry Brown, and is maintained by the commonwealth war graves commission. Designed under the guidelines laid by Renigald Blomfield, Herbert Baker & Edwin Lutyens, The D.W.C. is a exemplary monument in its category. Restoration of various parts of the project includesskillfulremaking of them, with suitable modifications for contemporary exigencies. Additions to the project attempt to interpret the original design theme.

Delhi war cemetery. New Delhi. 1998.
For **Commonwealth War Graves Commission**

SKA services
Renovation Works



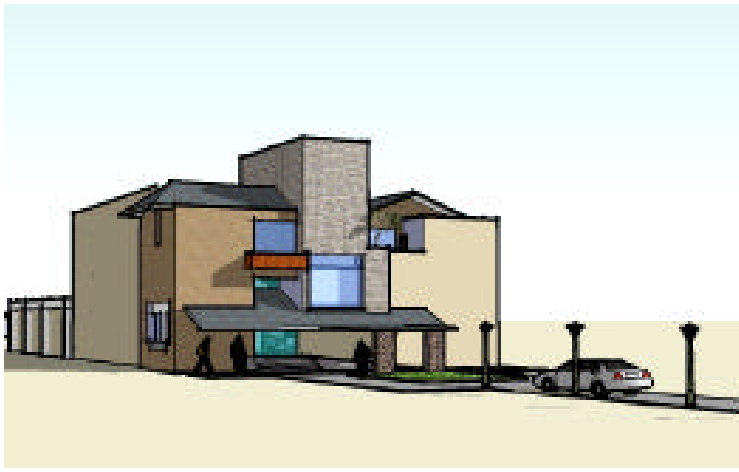
Vatican Embassy, Apostolic Nunciature.
Niti Marg, New Delhi.2001.

SKA services
Remodelling & Additions.
Project Architects & Services Consultancy

This fine neo classical building in the diplomatic enclave, required attention to its structural, plumbing & air conditioning services. The building plan had to be modified to incorporate additional areas & requirement. The Major work consisted of installing all new services, structural strengthening of parts, addition of new sisters house, redesign of chapel etc. All through the works, the major constraint of design was the maintenance of the original character of the building plan & facade and a sensitive intervention wherever required.



Commonwealth War Graves Commission.
Vladivostok Cemetry, Russia.
Baghdad North Gate Cemetry.
Renovations.
Works executed.2000.



GIS & Control Room Buildings. Manesar & Yelhanka.
For Power Grid Corporation (I)Ltd..

SKA services
Architecture Design.

The many GIS Substation buildings coming across the country, for power distribution, require the Serviced block for housing the GIS instrumentation & the Control room Building for the same. Done as Architects for the Systems Contractors, **Seimens India**, the two no. buildings are in design stage.



Mt. Retreat. Gorakhal, Nainital. 2011.

SKA services
Architecture Design.



North Block Building. Noida. 2002.
For Dimple Creation (Pvt.) Ltd.

SKA services
Architecture Design.



A Floresta. Residential Housing. Dehradun.
For Sarvapriya infratech (P)Ltd. N.Delhi.

SKA services
Architecture Design.
Structural & Services Design.

A Floresta is to be an integrated development, aiming to be quality residential development that is harmonious to its surroundings, conducive to community formation & state of the art in providing for the residential infrastructure. Nestled in between the hills & the river, the site is located within convenient distance of the City Centre of DehraDun (uttrakhand), and has commanding views to the Hills of Mussoorie. The Pristine nature of its surroundings invokes the very character of the planned development, which seeks to develop within & akin to a forest, ensuring ecological balance, green buildings & an urban forestry in its character. On a programme development for about 1.6 Hectares of site area, the development will provide for about 200 family units, in various options of 4Br, 3Br, 2 Br & luxury suites. The residential units are generous in size & innovative in their designs. Each unit has upmarket specifications, with thoughtful detailing. The community programme is to develop infrastructure for Club House, swimming pool, recreational sport & community spaces. With about seventy percent of the site as open space, the development will have nature trails, jogging paths, children's





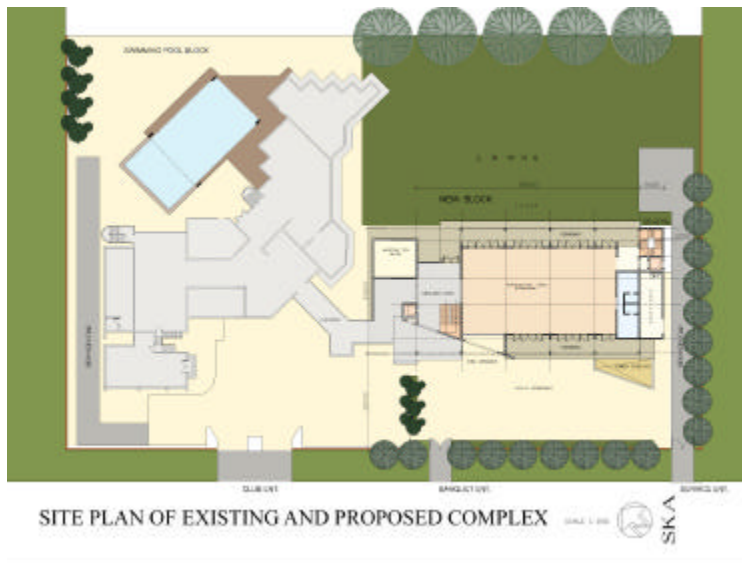
Factory Building for PP Rolling Mills, Faridabad.



Hostel Block. Patudi.
For **Global PathFinders School.**

SKA services
Architecture Design.

The Hostel Block for two hundred residents & twelve staff accommodations is a part of the master plan developing at the Ongoing School Campus at Patudi.



Additions & Developments at AVI(Club).Noida.
For **Arun Vihar Institute (Club)**

SKA services
Architecture Design.

The Four Hectare site of the Institute for Defence Officers acts as the Hub of Social Life for the personal stationed at Noida. The present facilities are outdated to contemporary requirements. The Present scheme envisages a phase wise redevelopment, including additional facilities of Banqueting, Guest House, Swimming pool , Shopping





Farm Building For M/s Dhanuka Agritech Ltd. At N.O.I.D.A.

The Architectural practice is striving to acquire a group of complementing Architects. The studio is a design hub where hierarchy is enforced by individual capabilities alone. The Design studio promotes dialogue & dissent.

The organizational hierarchy consists of Principal Architects, Associate Architects & Architects, giving an impetus to growth. Academic involvement & professional activism is encouraged, as an Office policy. The Practice hopes to grow into a larger number of quality professionals.

Assisting this Core activity are experienced Engineering consultants, who have been in constant collaboration with SKA. Established practices in their respective disciplines, they are an integral part of the Office manpower resources.





Sudhir Khandelwal
Principal Architect

School of Planning & Architecture.
Dept. of Urban Design, 1993.

University of Roorkee, Roorkee.
Bachelor of Architecture with
Honors, 1990.

Dept. of Urban Design, S.P.A.,
Visiting Faculty, 1996 onwards.

Dept. of Physical Planning, S.P.A.
Visiting Faculty, 2000 onwards.

Member, Council of Architecture.
Fellow , Institute of Urban Design.

Sudhir Khandelwal, principal at SKA,
is a graduate from University of
Roorkee & with a postgraduate
degree in Urban Design from S.P.A,
New Delhi. He contributes to
establishing & exploring the Design
Processes at the Practice.



Sangita Agrawal
Principal Architect

School of Planning & Architecture.
Dept. of B.E & Mgmt., 1993.

University of Roorkee, Roorkee.
Bachelor of Architecture with Honors,
1990.
U.O.R. Gold Medal.

Member, Council of Architecture.

Sangita Agrawal brings with her the experience of organizing & achieving large scaled projects like townships, malls, residential housing etc. As the G.M. (Arch.) of Unitech Ltd. she organised international design consultancies in the execution of their projects. She has rigorous experience of the logistics of scaled projects.

As a researcher she has works on urban waste management, papers of her works been published in Tokyo.



Manish Aggarwal
Associate Architect

IIT Roorkee, Roorkee.
Bachelor of Architecture, 1993.

Member, Council of Architecture.

Manish has a long-standing experience at interfacing design with the implementation processes. Adept at all engineering processes, he brings practicality to the Office Design Process. As an associate, he is responsible for ensuring the co-ordination of the Studio work with the Engineering & Construction Activities.

R.S.M. Engineering Consultants .Structural consultants.

Rajiv Sharma,

B.E.Civil. Univ. Of Roorkee. (1985).

M.Tech.(struct. Engg.) IIT, Kanpur.(1987)

Hemant Kumar

B.E. Civil. Delhi college of Engr. (1989).

The structural design Co. provides the following services:

Structural Design of Buildings

Structural Design of Bridges

Retrofitting of Damaged and Under Designed Structures using No Linear Pushover Analysis

Preparation of Tender documents and specifications

Estimation of quantities and rate analysis

Currently we are using finite element software **SAP2000-Non Linear, ETABS Non-Linear** and **SAFE** developed by Computers and Structures Inc. Berkeley, U.S.A. for analysis and design of all types of structures. We also have access to another analysis and design software **STAAD-III**. However it is used only when required by clients. Besides these we also have the capability of developing small and medium size computer programs for data manipulation, programming of plotters, printers for specific requirements of a project.



WBG Electrical Engineers. Electrical Engineers & Consultants
Keshav Chandra Sharma . B.E.(Electrical)



Ark Consultants. Plumbing & Fire Fighting Consultants.
Ashok Gangwar . B.E.(Civil)

C.K.Gupta. Quantity surveyors & project co-ordinators.
C.K.Gupta. B.E.(Civil)



Project List

Offices & Factories

Dimple Creations (Pvt.) Ltd. Noida.
FineLines. Noida
K.P.Home, Noida.
Golden Decors (P) Ltd. Noida.
Shree Bharat Int. Ltd. Noida.
N.S.Industries. Noida.
Shree Handicrafts (P) Ltd. Noida.
Vidya Exports. Noida.
Shree International. Panipat.
Krishna Sales Co. Noida.
Shree International. Noida.

Residential Housing

South City Gardens. Unitech Ltd. Lucknow.
Housing for I.A.A.S. Noida.
A Foresta. Residential Housing.SarvaPriya Infratech. DehraDun.

Residential Houses

House of Sh. R.G.Agrawal. Noida.
Residence of Sh. Shyam Khetan, Noida.
House of R.K. Khetan, Noida.
House of Capt. Zaheer. New Delhi.
House of Ritika & Ashish Wahi. Noida.
House of Mr. Anis Ahmed. Noida.

Townships & Urban Design

Urban Design studies. Nairobi Metropolitan Area, Kenya. with ArCiti.
Port Town Pipavav. with SWA
Various MasterPlans, Unitech Ltd. (Cochin, Agra, Siliguri, Varanasi). with SWA
Silver Oak Community. N.Delhi.

Institutions & Administrative Etc.

Batra Associates (Pvt.) Ltd
Global Pathfinder School. Patudi.
N.C.Jindal Hospital.
Nurses Hostel.
Cafeteria Building
Doctors Residences.
J.B.G & .C Ltd. Shibani.
State Bank of India.
Various Branches
Kunj Bhawan. New Delhi.
Shishu Sewa Mandir.

Institutional & Conservation Etc.

Remodellings at Vatican Embassy. New Delhi.
Delhi war Cemetry. New Delhi.
C.W.G.C. Various Places.

Hospitality

Hotel at Belgaum, Whispering Plams (pvt.) Ltd.

Office Interiors

Shree Bharat Int. Ltd. Noida.
Vidya Exports. Noida.
Krishan sales Co. Noida.
Shree Handicrafts (P) Ltd.. Noida.
Nexus Buying House. New Delhi.
Kansons House. New Delhi.

