

WE ARE PLEASED TO ANNOUNCE THE COMPLETION OF OUR PROJECTS, **'TWO HOUSES'**. SEPARATE & INDIVIDUAL, THE TWO PROJECTS MARK THE EXPLORATION OF A TANDEM OF COMMON IDEAS. MARKING A PHASE OF LOOKING AT FORM AS A PRECURSOR TO DETERMINING THE PLAN, THE TWO HOUSES ATTEMPT TO UNIFY BOTH, MANAGING AN INTERPLAY THAT IS CENTERED ON OTHER IDEAS. THIS PHASE ALSO MARKS OUR ATTEMPT TO LOOK AT ABSTRACT & IDIOSYNCRATIC REFERENCING TO THE CREATION OF FORM. WHILE URBAN POSITIONING REMAINS AS A SOURCE OF ARTICULATING THE FORM, WE HAVE OUR OWN WANTS THAT THE FORM MUST PERFORM. THE TWO FORMS, ALSO & TOGETHER, DEVELOP A VOCABULARY OF ARCHITECTURAL IMAGERY & ELEMENTS THAT ARE A MARKER TO THE NEO MODERNIST TENDENCIES OF THE DESIGN TEAM.

HOUSE OF RITIKA & ASHISH WAHL, NOIDA, 2004-06.

A MONOLITH IN ITS ARCHITECTURAL EXPRESSION, THE FORM ARTICULATES AT THE CORNER, IN RESPONSE TO THE BEND IN THE STREET THAT IT SITS ON. THE BEND BECOMES THE ARCHITECTURAL FULCRUM, THAT DEVELOPS, DISTORTS & MANAGES ALL AROUND IT. THE MONOLITH COLLAPSE INSIDE, IN A REVELATION OF VISUAL & VERTICAL LINKAGES, SIGHTS & DRAMA.



HOUSE OF MR. ANIS AHMEAD, NOIDA, 2004-06.

THE FORM IS A FAÇADE, PARTICULAR TO ITS POSITION ON THE STREET. THE FAÇADE DEALS WITH ITS LINEARITY, SCALE & SURROUNDINGS BY NEGOTIATED ARTICULATION, COLLAPSING AT CONTROLLED POSITION. THE ARCHITECTURAL PLAY IS CONTROLLED BY THE ELEMENT OF A WAVE IN THE FORM. THE "WAVE" FURTHER DESCRIBES ITSELF AS AN ELEMENT TO THE INTERNAL EXPRESSIONS.



*ARJUN ROSHA, AT SICA.

We are pleased to announce the completion of the following Houses under our 'Two Houses' design Investigations series- continuing the studio strategy of investigating similar idea on simultaneous ongoing projects. The investigation in this series involve deriving architectural form in 'stacked plan' situation. The limitation of stacking a similar Plan at all levels, with little scope in plan variation has resulted in devising plans that provide the scope for maneuver in form making. That Besides, the Two forms continue to develop imagery based on our tendencies for minimalism, neo modernist in its pursuit & striving in its impact.

House of Capt. Zaheer New Delhi. (2005-2008).

On a 240 Sq.Mt. Lot size, this is a street House, with three stacked units. The Ground Unit combines with the basement to create a Duplex living. The other units are independent. The façade strives for street continuum using minimal elements to address itself.



House of Mr. Gaurav Aggarwal, Noida. (2005- 2008).

On a 380 Sq.Mt. Lot size, this semidetached plotted House has Two No. similar Plan forms at the Ground & First Level. The evacuated corner combines with the street façade to create depth& variation to a otherwise regular façade. The Internal form is a continuation of many vertical combines.



We are pleased to announce the completion of the following Houses under our **'Two Houses'** design Investigations series- continuing the studio strategy of investigating similar idea on simultaneous ongoing projects. The investigation in this series involve deriving architectural form in 'stacked plan' situation. The limitation of stacking a similar Plan at all levels, with little scope in plan variation has resulted in devising plans that provide the scope for maneuver in form making. That Besides, the Two forms continue to develop imagery based on our tendencies for minimalism, neo modernist in its pursuit & striving in its impact.

House of Capt. Zaheer New Delhi. (2005-2008).

On a 240 Sq.Mt. Lot size, this is a street House, with three stacked units. The Ground Unit combines with the basement to create a Duplex living. The other units are independent. The façade strives for street continuum using minimal elements to address itself.



House of Mr. Gaurav Aggarwal, Noida. (2005- 2008).

On a 380 Sq.Mt. Lot size, this semidetached plotted House has Two No. similar Plan forms at the Ground & First Level. The evacuated corner combines with the street façade to create depth& variation to a otherwise regular façade. The Internal form is a continuation of many vertical combines.



We are Pleased to announce the completion of the ' commercial & Office Building' for B.A.Ltd, at Noida. The Building marks the arrival of its type of Buildings in the Studio Repertoire. Using Structural innovations & state of the art services, the building aims to address the Plan requirements of flexibility in its organization & services. And yet the Building seeks to develop & achieve at set of architectural aspirations, derived out of its position & context.

Office Building for B.A.Ltd. N.O.I.D.A. (2007-2009).

The office Building is situated in the newly developing Office district of the Noida. The district is de facto development due to the Metro link developing in its vicinity. Positioned on one of the perpendicular roads originating from the metro link, the Building seeks to become a street façade on a fast emerging major vehicular arteries of the city. The façade of the building is developed to this movement, playing at an appreciable angle to reflect & produce imagery to the fast movement.

Floor plates of about ten thousand square feet are serviced with the State of Art Electro mechanical systems that can be adapted to variable uses.



Salient Specifications

Site Area : 2000 Sq.M

Covered area: 4000 Sq.M

Structural System: Flat Plate Construction

Design Team: Sudhir Khandelwal, Manish Agarwal, Arjun Roshia.



We are pleased to announce the completion of the Project " Office Building for SSS". Built on a 200 Sq.M Plot of Industrial land, this is to be a office for a buying agency. Maximizing its potential of a location facing a park & a street corner, the architectural form is a interplay of two blocks, with transparency to appropriate the spaces outside. The Plan is to make possible clear & open floor plates with slits of vertical integration.

Office Building for SSS Noida. (2007-2009).



Site Area: 200 Sq.M

Built Up Area : 500Sq.M.

SKA Services: Architectural,
Services & Interiors Design



We are pleased to announce the completion of these two factories. Both on a similar size of plot area & under the same zoning laws, have identical requirements, as Garment manufacturing units. With the Zoning laws resulting in the "serviced Block" form, the Architectonics' strive to attempt character in the location of a field with fairly similar building masses. The Character is built on detailing & subtle references.

Factory Building for NS Industries. Noida. (2007-2009).



Site Area: 1000Sq.M

Built Up Area : 1500Sq.M.

SKA Services: Architectural,
Services & Interiors Design



Factory Building for SnD Inc. Noida. (2007-2009).



Site Area: 800 Sq.M

Built Up Area : 1600Sq.M.

SKA Services: Architectural,
Services & Interiors Design





We are pleased to reveal the resulting form & finish of our designed project – South City Gardens, at Lucknow. The Proposed Community Housing is on a plot area of approximately 9200 Sq.M. On a linear plot adjacent to the Road to the Amausi airport, at Lucknow. The Built mass is arranged to form two town blocks arranged about a Central Green. The end of this green consists of the community club on one end & a stilted Residential Block on the other. The parking is in the Basement Level. Each town block has, thus two sides, the street side that provides entrances & a Green facing side. The proposal consists of 32 Nos. two bedroom apartments, 50 No.s three bedroom apartments & eight No.s, three bedroom penthouse apartments.

Site Area: 9200 Sq.M

Built Up Area : 13800 Sq.M.

SKA Services: Architectural Design.

Structural, Electrical & plumbing Services.



South City Gardens, Lucknow. Gp. Housing. For Unitech Ltd. (2006-2010).





We are pleased to complete the office Building for TRIUMPH. It is a structural attempt at creating a flat plate structure, on a limited size plot, service for flexibility of function. The architectural form aims to become sculptural, referencing its immediate surrounding, while negating the derelict Context.



Site Area: 800Sq.M

Built Up Area : 1750Sq.M.

SKA Services: Architectural Design.

Structural, Electrical & plumbing Services.



Office Building for TRIUMPH, Noida. For M/s Triumph.
(2008-2011).
Credits: Manish Aggarwal. Architect.





We are pleased to showcase the nearing completion phase of these projects.

Site Area: 200 Sq.M

Built Up Area : 325 Sq.M.

SKA Services: Architectural Design.

House of Shalini & Mohit Jain, Noida. (2009-2011).
Credits: Swati Krishna. Architect.

Site Area: 1800 Sq.M

Built Up Area : 5000 Sq.M.

SKA Services: Architectural Design.

Factory Building for M/s Finelines, Noida. (2007-2011).
Credits: Manish Aggarwal. Architect.

Structural, Electrical & plumbing Services.



We are Pleased to share the near completion of this house, started with the phrase- the 'silver luxe' house!! With the intended desire to develop an understated opulence, the architectural form was to derive its standing by resolving the inbuilt tensions by minimalism & materiality. The interiors are similarly subject to treating opulence.

Built on a 500 sq.Yd of plot area, the architecture of the house uses traditional craftsmanship, global materiality- all subject to the standard of minimalist opulence.

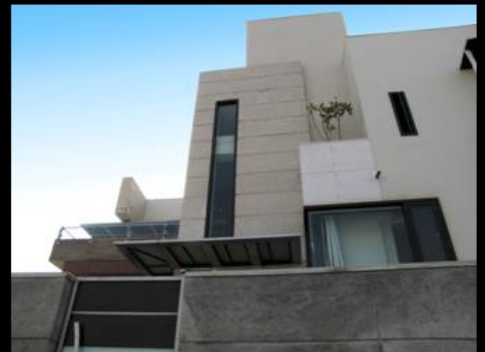
Ready for Occupation, the interiors post will follow soon!!

Site Area: 500 Sq.Yd

Built Up Area : 8000 sq.Ft.

SKA Services: Architectural Design.

Structural, Electrical & plumbing Services.



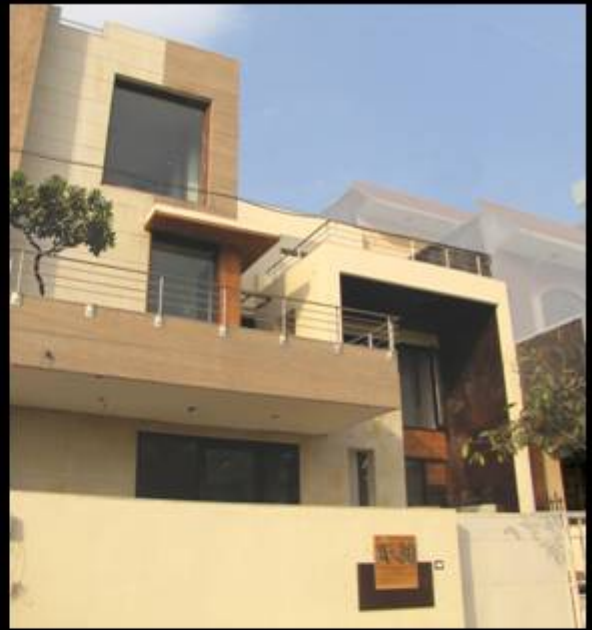
House of Mr. Anil Gupta, Noida.
(2008-2011).



-Swati Krishna at **SKA**.

Email: info@sudhirkhandelwal.com

Website: www.sudhirkhandelwal.com



House of Mr. Shalini & Mohit Jain, Noida.
(2008-2011).

Site Area: 200
Sq.M

Built Up Area : 320
Sq.M

SKA Services:
Architectural
Design.

Structural,
Electrical &
plumbing Services.

Credits: Swati
Krishna

Lead Contractors:
Ashok Thapliyal.



We are Pleased to share the near completion of 'the Small house', - our intention at creating an Object in a otherwise Row Housing Situation. Built on a 200 Sq.M of plot area, the architecture of the house uses local & cost effective materiality, used with innovation & workmanship to create the language of minimalism. Ready for Occupation, the interiors post will follow soon.